

Stone Masters Inc
515 School House Rd
Kennett Sq PA 19348



ROCKS!

Resin + Mesh Demystified

Granite is cut from the quarry in a block, that block is then shipped to a slab producer. There they slice the block into 3cm (apprx. 1 1/4") thick slabs using a 30' diamond blade or diamond wire (this process is much like cutting a block of cheese). These slabs are kept in order as they are sliced so they can continue through the process in the same order as they came from the earth. Next the griding/polishing process beings, the use of diamonds from coarse grit to fine grit are used to achieve smoothness and eventually a polished surface.



In between the different stages of polishing, most granites are coated with an epoxy resin. They are then placed in a vacuum chamber so the resin can be vacuumed through the granite and into the micro fissures and natural cracks of the stone. The slabs are then baked in an oven so the resin can cure rock hard inside of the stone. One of the first noticeable affects of the resin is a darkening effect on the whole surface of the slab. This byproduct enhances the color of the slab and allows for a better polishing effect as a final result. The resin has the double effect of assuring the strength of the slabs (so they can ship from anywhere in the world to the US) and providing a clean feeling touch to the end users.



Today more than ever, when selecting slabs for your stone countertops, you will notice that some slabs contain a mesh backing. That's because over the years, the quarrying process has improved allowing for some stones that were never able to be removed from the earth in block format, to be cut, polished, and shipped to suppliers and fabricators (I.E. Quartzites). With better technology and equipment, quarriers have been able to remove more fragile and exotic stones from the earth, that may not have been able to be removed previously that way without them breaking, or crumbling. The mesh backing is added by the block/slab fabricator (the one who cuts the blocks into slabs) for added support, or reinforcement for the shipping and handling process.

FINISHES AND TRENDS

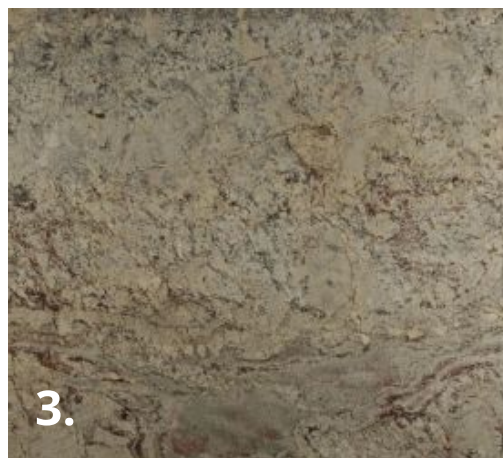
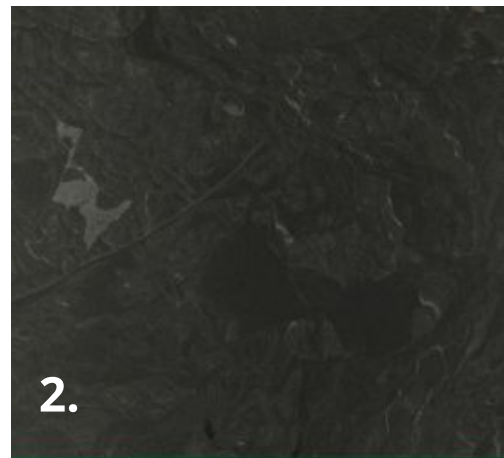
Finishes have been trending as we're seeing increased popularity in matte finishes like, Honed, Leathered, and Brushed. Natural Stone typically comes in a polished finish, but these unique matte finishes also lend a texture to the stone. Honing a stone is something a fabricator can do in-house, it simply removes the resin or "shiny" part of the stone and doesn't add much texture. White Leathered and Brushed finishes are done at the quarries and will be noticeably have a texture to the touch. Care and maintenance for all finishes are comparable if the stone is properly sealed. Honing, Leathering, or Brushing a stone can sometimes take off a layer of necessary protection, so its important to look at the SR-Rating (stain resistance) on an individual stone.

Examples in order of increasing texture.

Steel Grey **Polished**



Jet Mist **Honed**



White Springs **Brushed**



Golden Crystal **Leathered**

COUNTERTOP SUPPORT

The CounterBalance Plates provide a cost-efficient, quick, easy install to support overhangs on stone countertops. These products give you an alternative to banging their knees on pricey corbels and provide superior support and security. These low-profile brackets are hidden from view offering a clean, updated look. The CounterPlates are designed to attach to half walls or pony walls, supporting overhangs on "breakfast bar" style countertops. The CounterPlate and CounterPlate XL support up to a 13" and 15" overhang respectively. Supports should be spaced no more than 16" to 20" apart for optimum performance.



DIY BLANKS AND SINKS. MORE COLORS

Introducing two more DIY Blank color options! We now have a total of 4 DIY Blank and Stock sink colors. These slabs are for self Pick up, self fabrication and self installation, we have 96 inch long x approx 26 inch x 1.25 inch thick Soapstone Countertop Blanks at **\$375** each for Quantity 1 or 2, quantity discounts are available at **\$350** each for 3 or more (+PA Sales Tax).

